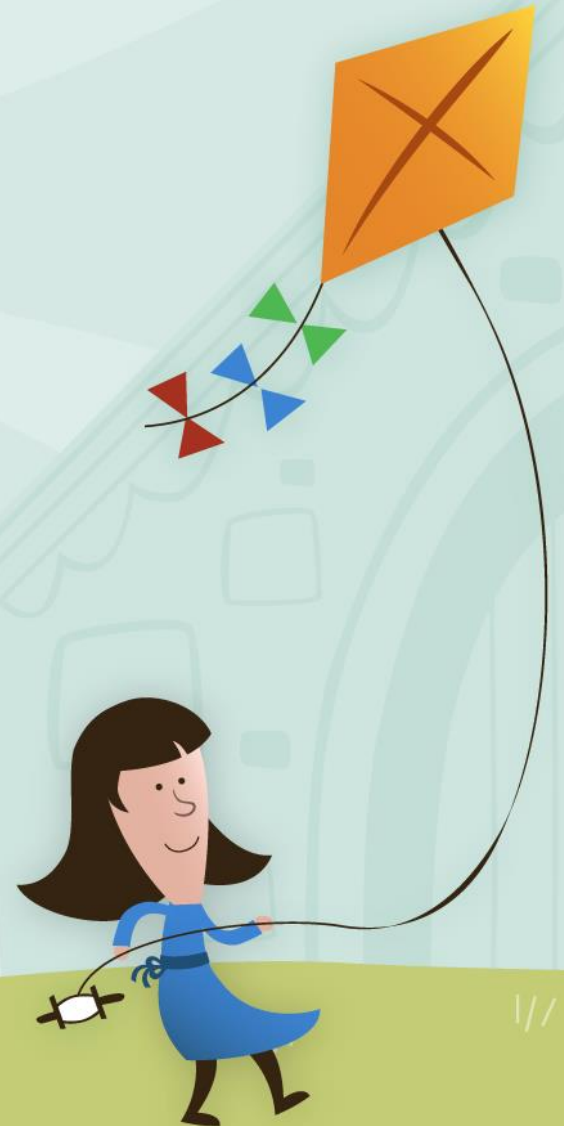


# Welcome to Year 5 at Crestwood Park



# HOME-SCHOOL AGREEMENT

As parents/carers we will:

<b>S MART</b>	Ensure our children arrive at school by 8.50am every day and support school policies in relation to school uniform.
<b>P OLITE</b>	Encourage our children to behave well and support the school's Behaviour Policy.
<b>A WARE</b>	Help our children to succeed by helping them at home with learning. This includes reading with them regularly and also working with school to support our children's well-being and mental health.
<b>R ESPECTFUL</b>	Manage our behaviour in and around school, providing mature role-models in how others should be treated.
<b>K IND</b>	Support children, staff and each other creating new friendships and role-modelling positive social skills.
<b>S AFE</b>	Raise any issues in a calm, supportive manner by contacting school directly. Work with the school and model safe and respectful behaviour when using social media.



# A typical day in the life of a year 5 child...

8.50 – Arrive at school

8.50 – 9.00 – Registration

9.00 – 9.30 – Assembly

9.30 – 10.00 – SPaG

10.00 – 10.45 – English

10.45 – 11.00 – Break

11.00 – 12.00 – Maths

12.00 – 1.00 – Lunch

1.00 – 1.20 – Independent Reading Time

1.20 – 2.45 – Curriculum

2.45–3.00– Fluency Fifteen

3.00 – 3.20 – Story Time

3.20 – Home time



# Your Child's Curriculum Journey...

Subject	Autumn 1	Autumn 2	Spring 1	Spring 2	Summer 1	Summer 2
Reading	Reading skills sessions incorporated into English lessons and taught in isolation where appropriate.					
Writing	Narrative, Descriptions, Character/Settings	Report, Recount, balanced argument, Newspaper	Extended narrative, non-chronological report, explanation text, biography.	Leaflet, Persuasive writing, instructions, poetry.	Setting description, character description, diary entry.	Letter, diary entry, newspaper report, narrative.
Mathematics	Place Value Addition and Subtraction Statistics Multiplication and Division Perimeter and Area		Multiplication and Division Fractions Decimals and Percentages		Decimals Properties of shape Position and Direction Converting Units	
Science	Properties and changes of materials	Properties and changes of materials	Earth and Space	Earth and Space	Animals including humans Living things and their habitats	Forces
R.E	Symbols		Places of Worship		Creation	
Music	Getting starting with Music Tech- How does music bring us together?	Emotions and Musical Styles- How does music connect us with our past?	Exploring key & time signatures- How does music improve our world?	Introducing chords- How does music teach us about our community?	Words, meaning and expression- How does music shape our way of life?	Identifying important musical elements- How does music connect us with the environment?
Art	Colour	Drawing	Pattern	Texture	Printing	3D Form
D.T	Frame Structures		Cultural Celebration		Combining different fabric shapes	
History	Ancient Greece: The Story of the Trojan Horse: fact, myth or legend?	Mayans: Why did the ancient Maya change their way of life?			Local Area Study	
Geography			Earth's Formations			
P.E	Games- Netball Dance	Gymnastics- Flight Dance	Gymnastics- Functional Use of the Limbs Games - Hockey	Games- Bowling in Striking and Fielding OAA – Navigation & Adventure	Athletics – Running, Throwing & Jumping Swimming	Games- Tennis Swimming
PSHE	What makes up a person's identity?	What decisions can people make with money?	How can we help in an accident or emergency?	How can friends communicate safely?	How can drugs common to everyday life affect health?	What jobs would we like?
Computing	Sharing Information	Video Production	Selection in Physical Computing	Flat-File Databases	Vector Drawing	Selection in Quizzes
MFL	Weather expressions, time frames and seasons, il fait/ il y a		Where you live, giving opinions, j'habite J'adore/ J'aime/ Je n'aime pas/ Je déteste		What's in your town, singular and plural nouns	



# Independent Reading Time



The children will have the opportunity to read daily.

I will also check their reading record weekly and if they have read 5 times a week which is the school's expectation the children will have their reading challenge card punch. If they collect all punches by the end of half term they will attend the MEGA treat.

Each half term they will have a new card which will correspond to how ever many weeks in the half term.



## READING CHALLENGE

 I got This! 

\_\_\_\_\_

I have read 5 times this week = 1 punch  
8 punches = MEGA treat!

1	2	3	4	5
6	7	8		

## READING CHALLENGE/COMPETITION!



# Class Expectations

1. Always be kind to everyone.
2. Offer a helping hand.
3. We will always be honest.
4. Keep our hands and feet to ourselves.
5. Listen to everyone.



The children are aware of class expectations which follow alongside our school SPARKS behaviour policy. To be smart, polite, aware, respectful, kind and safe.



# P.E

P.E days are Monday with myself and Thursdays with Mr Barnett.

Remember on P.E days for safety reasons it is important to ensure all your jewellery is removed.

Looking after their jewellery is their responsibility.



# Homework

Homework will be sent home on a Wednesday. The children will have English and Maths homework.

English books are the same as last year however maths is a little different. Our new maths homework books focus on the children's arithmetic skills.

Home work is always due back in on the following Monday.





# General Information

- Names in/ on everything!
- Ties- children have been given their first one but if they loose it you will need to replace it please.
- Family Assemblies- Fridays at 9am
- Tuck money (25p for toast or/and a milkshake)- order online
- Newsletter- Friday
- Lockers= Small bags please!
- Named water bottle

